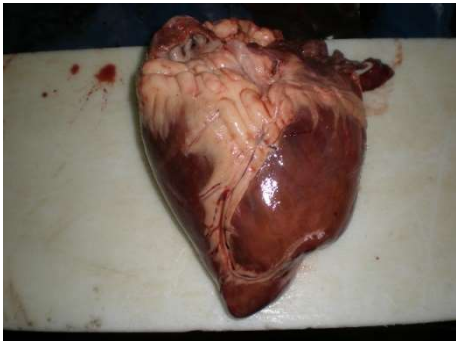


BEEF HEARTS



Characteristics.

Odor:	Fresh meat.
Texture:	Firm.
Color:	Dark red with yellow Area linked to fat.
Aprox weight:	4 - 5 Kg.

Description.

The beef heart is a pump that supplies all its muscles and organs with oxygen and nutrient and carries away waste products. The heart is divided into two sides. The left side takes oxygenated blood from the lungs and supplies muscles and vital organs, such as the brain and kidney
Raw material consists of horse hearts.



Presentation

- Frozen product is placed on wooden pallets, covered with a blue polyethylene bag.
- All packaging is food grade approved.
- Wooden pallets of 47" x 39" x 43" (120 cm x 100 cm x 110 cm)
- **Approx Block measurement:** 23" x 16" x 4.7" (59 cm x 39 cm x 12 cm)
- **Frozen temp:** 0°F (-18°C)
- **Shelf life :** 24 months